

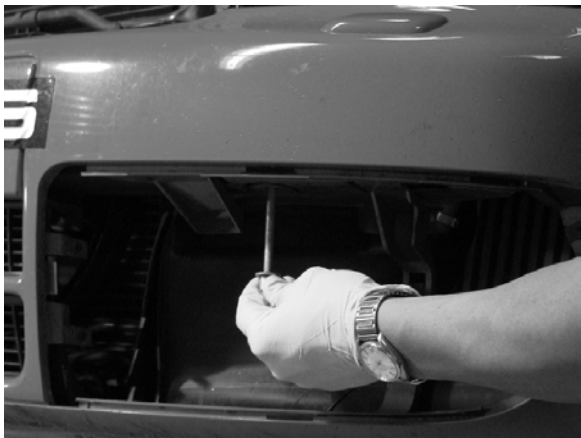
RS4 Intercooler Installation Manual

Step 1 – Remove Headlights. Remove the two T30 Torx screws from the top of the headlight, and the one side T30 Torx screw through the access port in the fender.



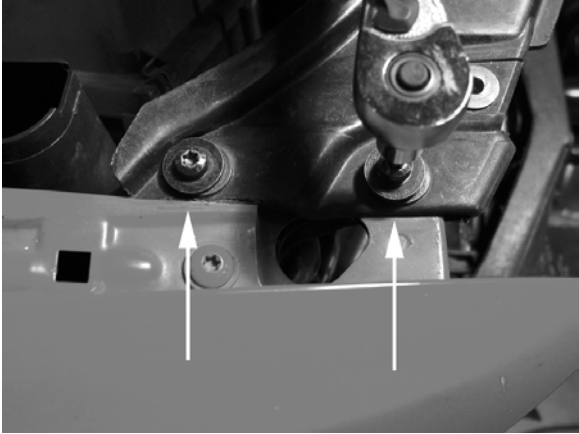
Unplug the headlight harnesses and carefully slide the headlight out from the front of the car.

Step 2 – Remove Bumper Cover. Remove the two side grille inserts from the front bumper. Remove the two 6mm Allen bolts from the bumper support brackets.

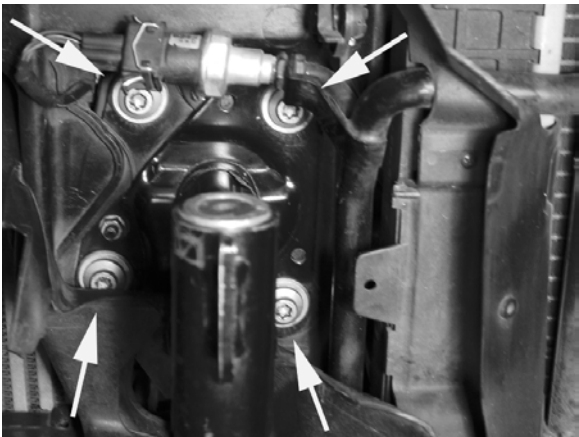


Remove the 10 quarter-turn fasteners from the splash shield underneath the car. Remove the T25 Torx screws between the fender liner and bumper. Firmly push bumper in towards the back of the car from the front. Push down on the edge of the bumper nearest the fender well, and then pull away from the car. Next, grab the bottom of the bumper near the fender well and pull upwards and out. After doing this on both sides the bumper will come straight off towards the front of the car. The headlight washer hose will need to be disconnected, and the line crimped to prevent fluid from leaking.

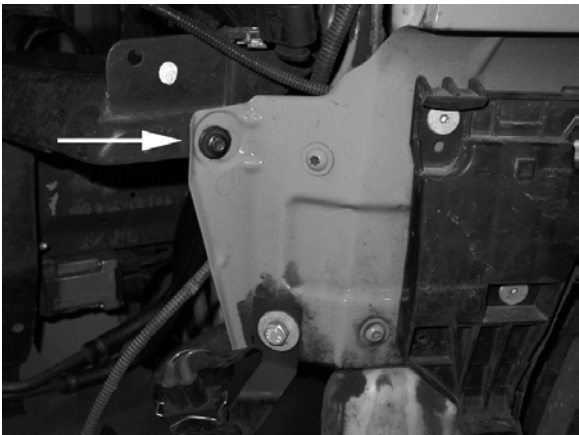
Step 3 – Remove Hardware from Radiator Support. Remove four (two per side) upper T30 bolts.



Remove eight (four per side) T45 bolts from around the bumper shocks.



Remove two (one per side) T30 bolts from each fender.



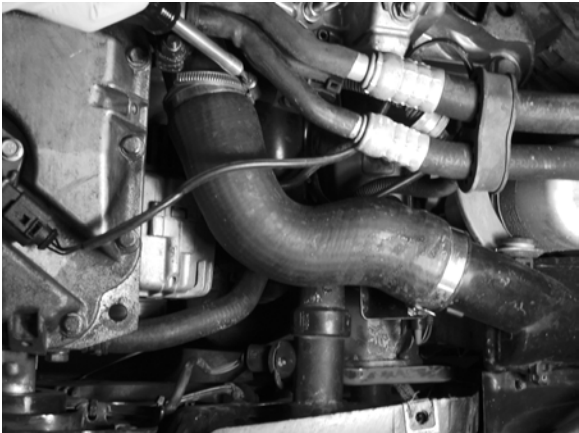
Step 4 – Remove Stock Intercooler Hose Clamps. Loosen hose clamps from upper intercooler hoses on the side of the plastic inlet pipes (or BiPipe).



Loosen drivers side lower hose clamp from turbo outlet pipe.



Loosen passenger side lower hose clamp from turbo outlet pipe.



Step 5 – Remove Stock Intercoolers. Remove the stock intercoolers from the car with the stock hoses attached. To do this, lift up on the intercooler and slide the intercooler towards the front of the car. The intercooler can now be pulled from its location from the bottom of the car. The radiator support will need to be moved in order to slide the intercoolers out. The passenger side intercooler may require more attention due to the air conditioning lines that run underneath it.

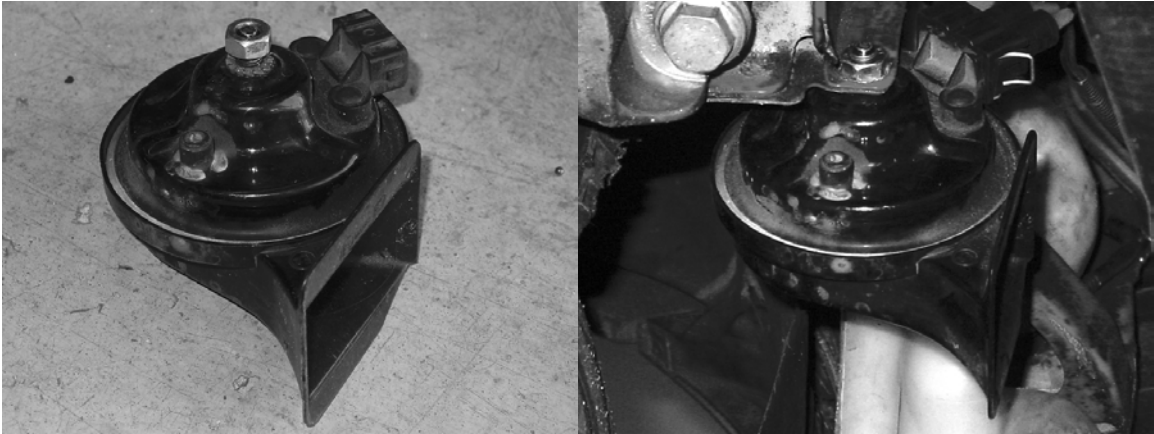
Step 6 – Remove Drivers Side Intercooler Bracket. Remove the drivers side intercooler bracket by using a 1/4" drill bit. Drill the heads off of the three rivets and remove the bracket from the car.



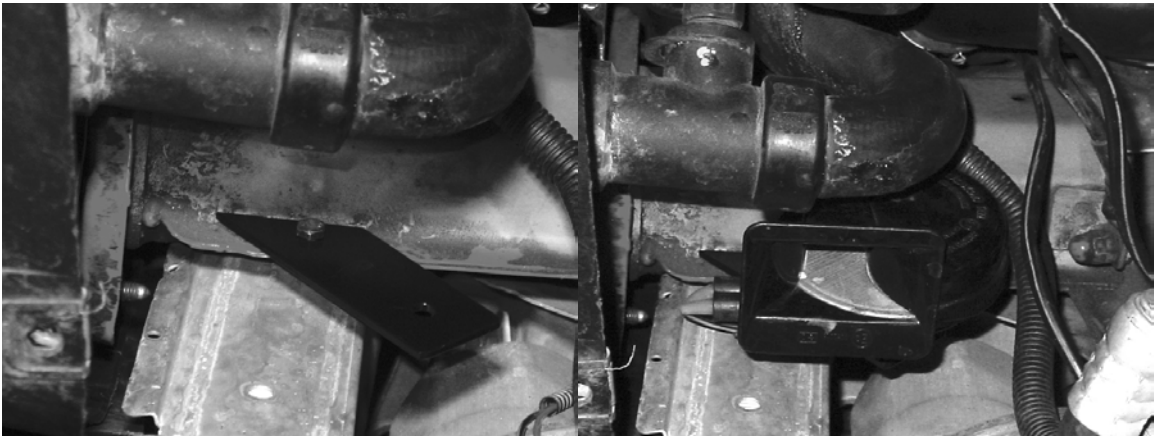
Step 7 – Move and Remount Horns. Remove horns from either side of car. Reroute horn wiring harness behind headlights. Drill holes in factory frame rails as shown. Be sure to space hole away from frame rail so that the bolt and nut heads have room to rotate.



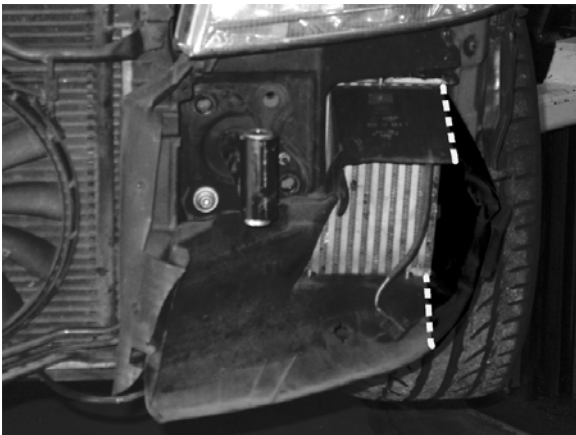
Using existing horn hardware, bolt drivers side horn directly to frame rail as shown.



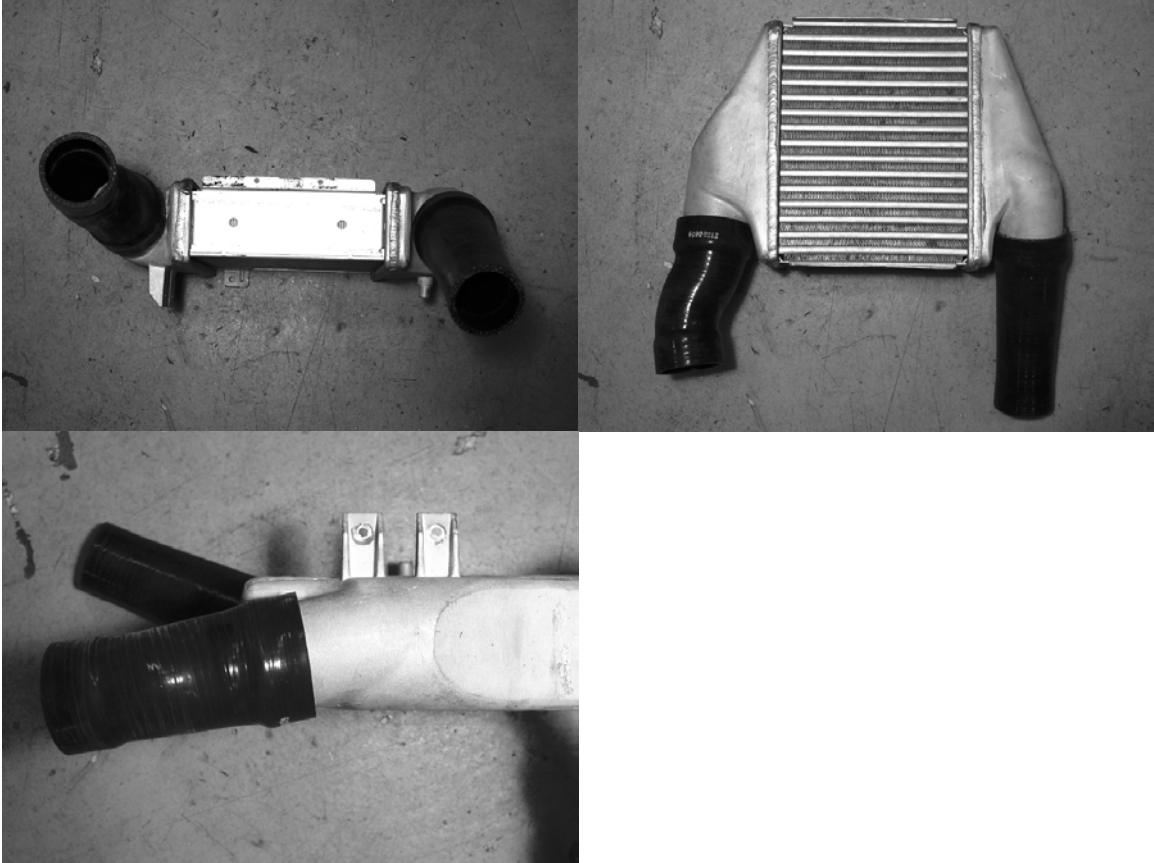
Attach supplied horn bracket to passenger side frame rail, then attach horn to bracket.



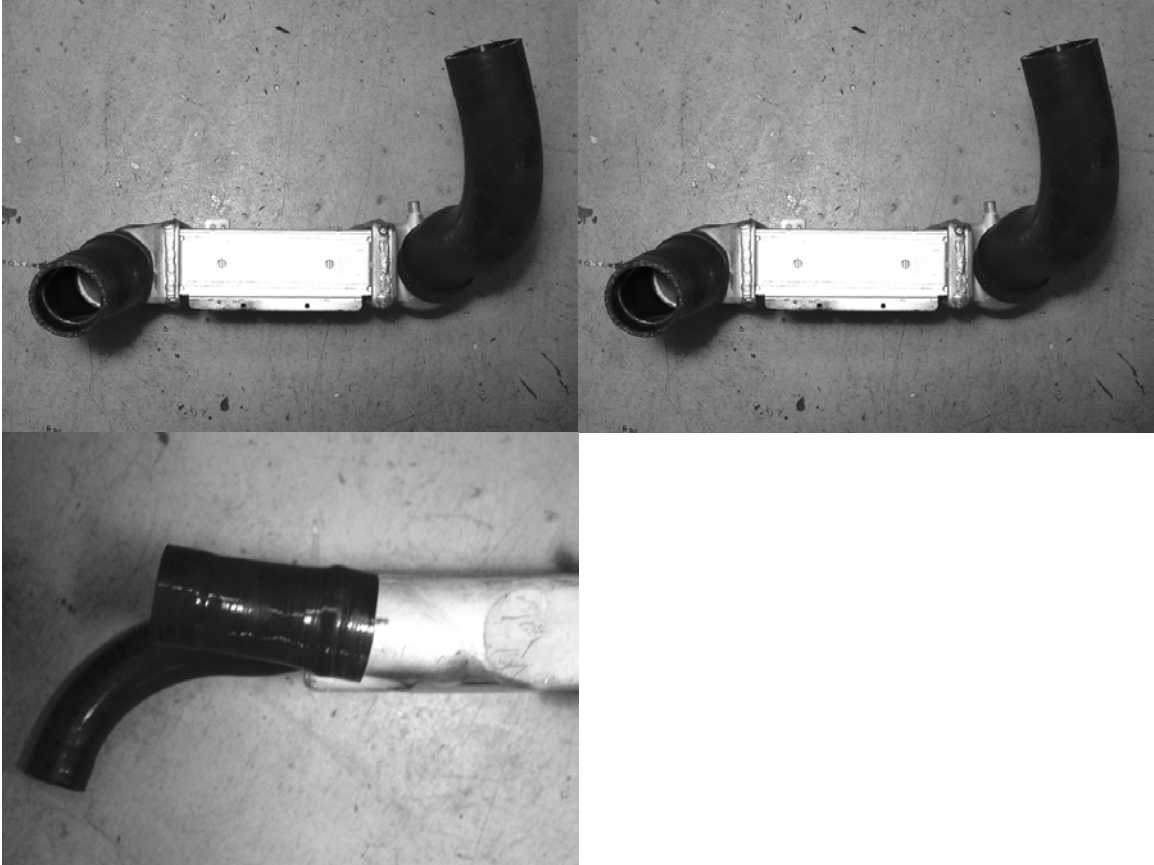
Step 8 – Trim Intercooler Shrouds. Unbolt the intercooler shrouds from the stock intercoolers. Trim the side off of the shrouds as shown by the dotted lines.



Step 9 – Install Hose Clamps and Hoses on RS4 Intercoolers. Do not use any type of lubricant on the inside of the hoses to ease installation. Slip hose clamps onto the hose before installing on intercooler.. On the drivers side intercooler, install upper hose Z1000829 and lower hose Z1000831. Orient the drivers side hoses as shown in the picture. Do not tighten the hose clamps.



For the passenger side, use hose Z1000828 for the upper hose and Z1000830 for the lower hose. Orient the passenger side hoses as shown in the picture. Do not tighten the hose clamps.



Step 10 – Cutting Fender and Radiator Support. Cover all open inlet pipes with a rag and then trim the fenders on either side as shown by the dotted lines.



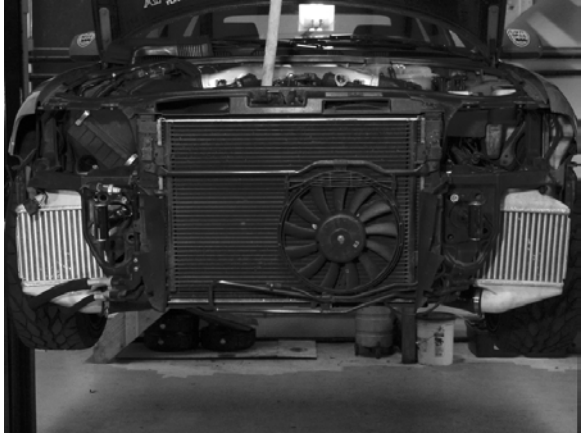
Trim the radiator support beneath the headlight openings as shown by the dotted lines.



Step 11 – Install Intercoolers in Car. Slide the RS4 intercoolers into position in the car using the same method that was used to remove the stock intercoolers. This step requires a lot of manipulation of the radiator support, the air conditioning lines (passenger side) and the intercoolers. Be careful and patient so as not to break anything.

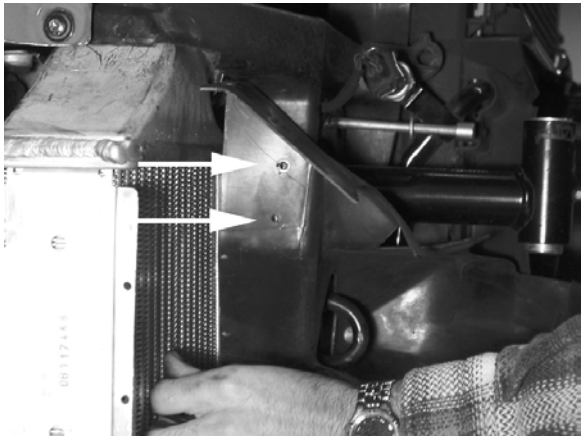
Step 12 – Install Remaining Intercooler Hose Clamps. Install hose clamps between the intercooler hoses and the turbo outlet and plastic inlet pipes. The clamps may need to be completely unscrewed, wrapped around the hose, and then reassembled.

Step 13 – Inspect Intercooler Orientation. The intercoolers should now be sitting in the car as shown.



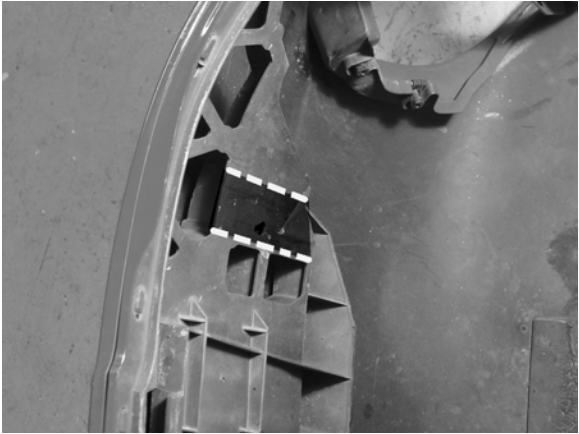
If needed, rotate intercooler hoses in order to get correct orientation. This should be the final position of the intercoolers. Tighten all eight hose clamps (four per side) once you are comfortable with their positioning. Brackets for the intercoolers are not needed, as the intercooler is sufficiently held in place by the frame rail, intercooler hoses, and the bumper cover.

Step 14 – Install Intercooler Shrouds. Hold shrouds in place as shown and drill two 1/8" holes in the radiator support.



Use self-tapping phillips head screws to secure shrouds to radiator support.

Step 15 – Trim Front Bumper Cover. Trim the inside of the front bumper cover as shown by the dotted line (passenger side).



When completed, the cover should look like this(drivers side).



Step 16 – Reinstall Radiator Support – Installation is reverse of removal. (See Step 3)

Step 17 – Reinstall Bumper Cover – Installation is reverse of removal. (See Step 2)

Step 18 – Reinstall Headlights – Installation is reverse of removal. (See Step 1)