

# Audi A4

## Current Flow Diagram

**No. 52 / 1**

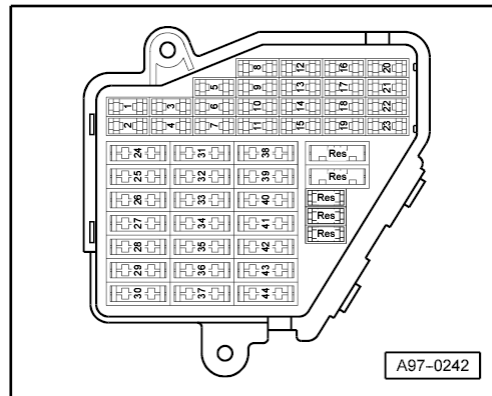
Edition 05.2003

### Radio

- Chorus
- Concert
- Symphony

From model year 2002

### Fuse box



- ♦ Dash panel, driver's side

#### Fuse colours

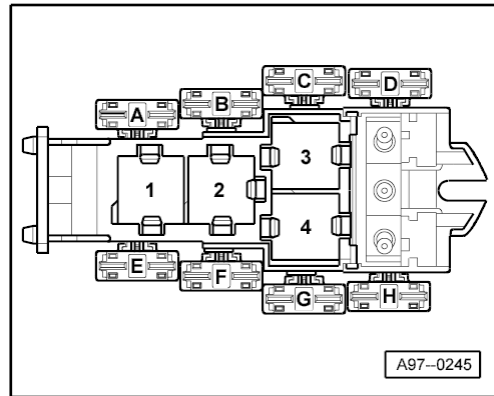
- 30 A - green
- 25 A - white
- 20 A - yellow
- 15 A - blue
- 10 A - red
- 7.5 A - brown
- 5 A - beige



#### Note:

From fuse number 23 upwards the fuses in the fuse box are designated as 223 etc. in the Current Flow Diagram.

#### 4-point relay carrier with screw connection

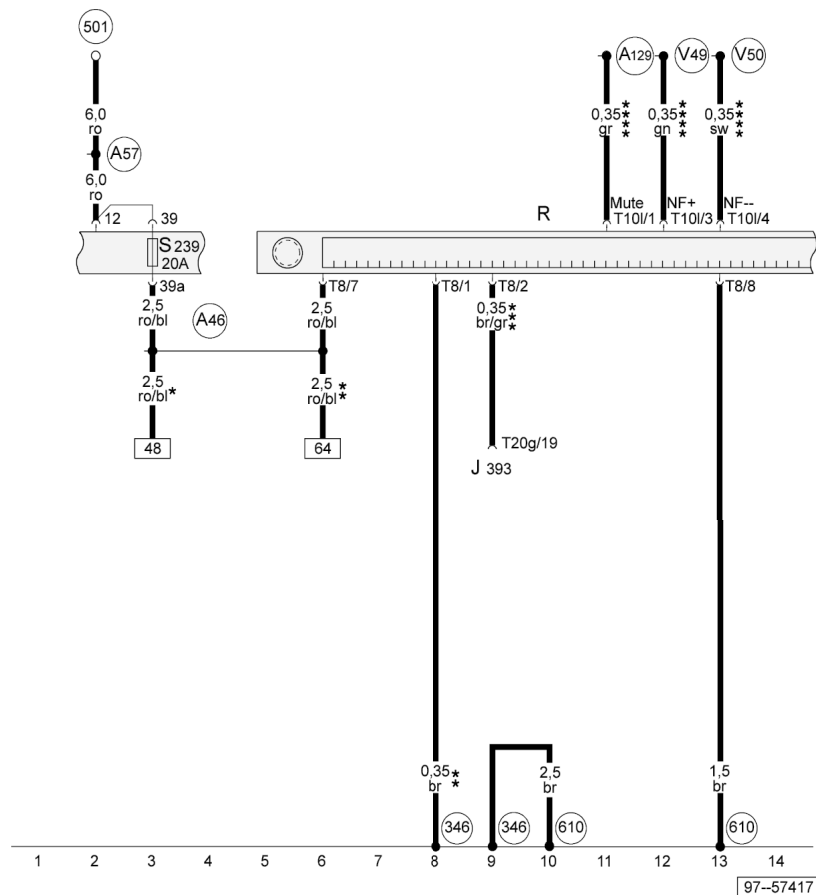
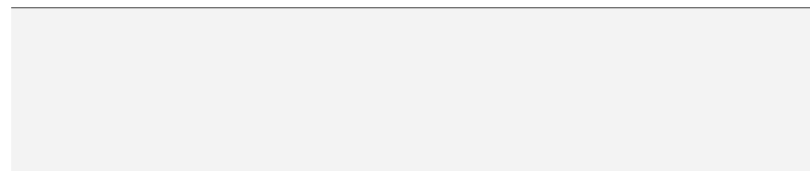


- ◆ Dash panel, driver's side

## Audi A4

## Current Flow Diagram

No. 52 / 2



## Voltage supply

- J393 - Convenience system central control unit
- R - Radio
- S239 - Fuse in fuse box
- T8 - 8-pin connector, black, radio connector III
- T10I - 10-pin connector, red, radio connector IV
- T20g - 20-pin connector, red, on convenience system central control unit (used to be connector 4)
- 346 - Earth connection (audio), in dash panel wiring harness
- 501 - Screw connection -2- (30), on relay plate
- 610 - Earth point (audio), below centre console, front
- A46 - Positive (+) connection (30 - from radio), in dash panel wiring harness
- A57 - Positive (+) connection -3- (30), in dash panel wiring harness
- A129 - Connection (muting), in dash panel wiring harness
- V49 - Connection (low frequency, NF +), in communication wiring harness
- V50 - Connection (low frequency, NF -), in communication wiring harness
- \* - Applies to active loudspeakers only
- \*\* - Applies to Bose loudspeakers only
- \*\*\* - Applies to anti-theft alarm system only
- \*\*\*\* - Only applies to models with telephone/telematics or provision for mobile phone

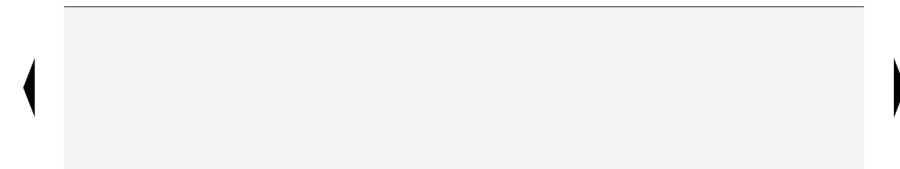
ws = white  
 sw = black  
 ro = red  
 br = brown  
 gn = green  
 bl = blue  
 gr = grey  
 li = purple  
 ge = yellow  
 or = orange  
 rs = pink

97-57417

## Audi A4

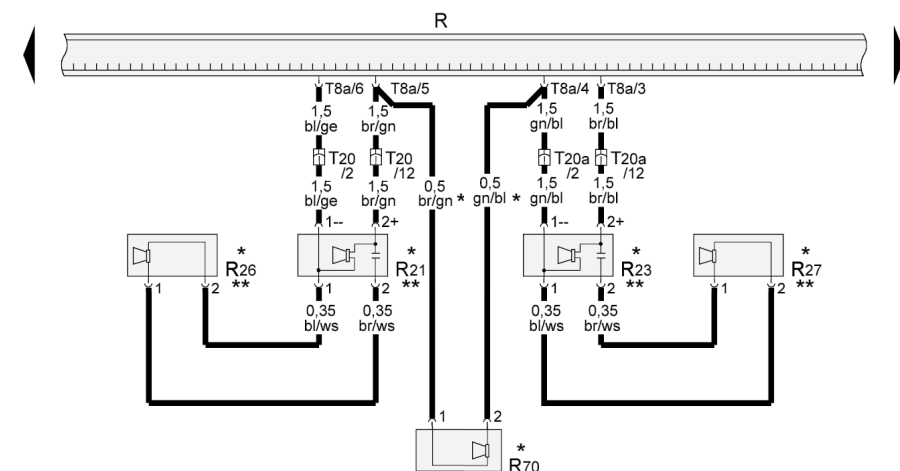
## Current Flow Diagram

No. 52 / 3



## Front loudspeakers

- R - Radio
- R21 - Bass loudspeaker, front left
- R23 - Bass loudspeaker, front right
- R26 - Mid-range/treble loudspeaker, front left
- R27 - Mid-range/treble loudspeaker, front right
- R70 - Internal loudspeaker (centre loudspeaker)
- T8a - 8-pin connector, brown, radio connector II
- T20 - 20-pin connector, black, door, A pillar, left
- T20a - 20-pin connector, black, door, A pillar, right
- \* - Only applies to models with active loudspeakers
- \*\* - Only applies to models with passive loudspeakers

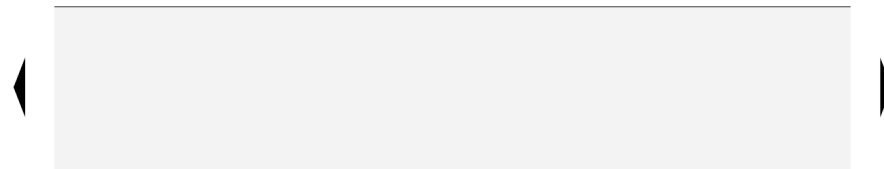


ws = white  
 sw = black  
 ro = red  
 br = brown  
 gn = green  
 bl = blue  
 gr = grey  
 li = purple  
 ge = yellow  
 or = orange  
 rs = pink

## Audi A4

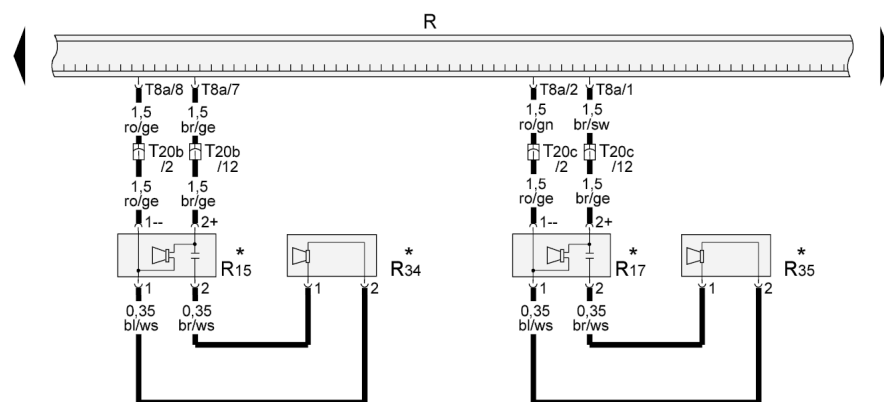
## Current Flow Diagram

No. 52 / 4



## Rear loudspeakers

- R - Radio
- R15 - Bass loudspeaker, rear left
- R17 - Bass loudspeaker, rear right
- R34 - Mid-range/treble loudspeaker, rear left
- R35 - Mid-range/treble loudspeaker, rear right
- T8a - 8-pin connector, brown, radio connector II
- T20b - 20-pin connector, black, door, B pillar, left
- T20c - 20-pin connector, black, door, B pillar, right
- \* - Only applies to models with passive loudspeakers



ws = white  
 sw = black  
 ro = red  
 br = brown  
 gn = green  
 bl = blue  
 gr = grey  
 li = purple  
 ge = yellow  
 or = orange  
 rs = pink

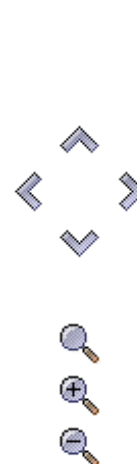
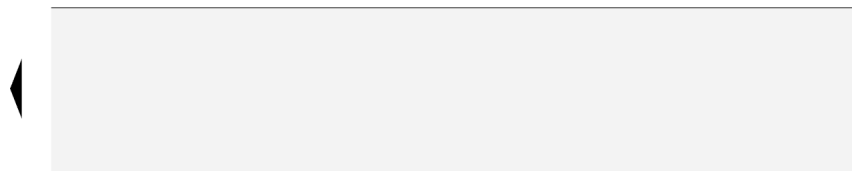
29 30 31 32 33 34 35 36 37 38 39 40 41 42

97--56589

## Audi A4

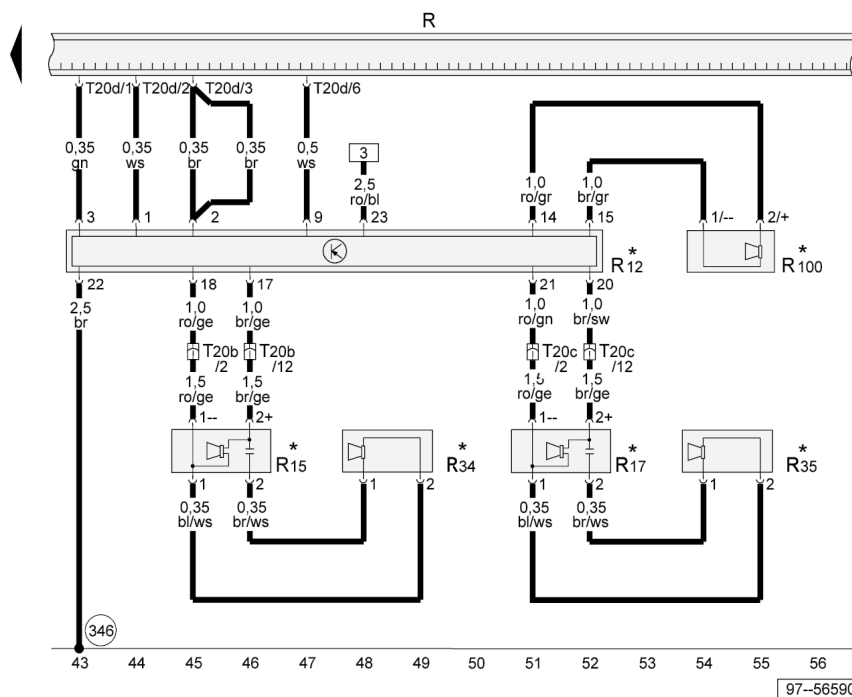
## Current Flow Diagram

No. 52 / 5



## Active loudspeakers, rear

- R - Radio
- R12 - Amplifier
- R15 - Bass loudspeaker, rear left
- R17 - Bass loudspeaker, rear right
- R34 - Mid-range/treble loudspeaker, rear left
- R35 - Mid-range/treble loudspeaker, rear right
- R100 - Bass loudspeaker
- T20b - 20-pin connector, black, door, B pillar, left
- T20c - 20-pin connector, black, door, B pillar, right
- T20d - 20-pin connector, black, radio connector I
- 346 - Earth connection (audio), in dash panel wiring harness
- \* - Only applies to models with active loudspeakers



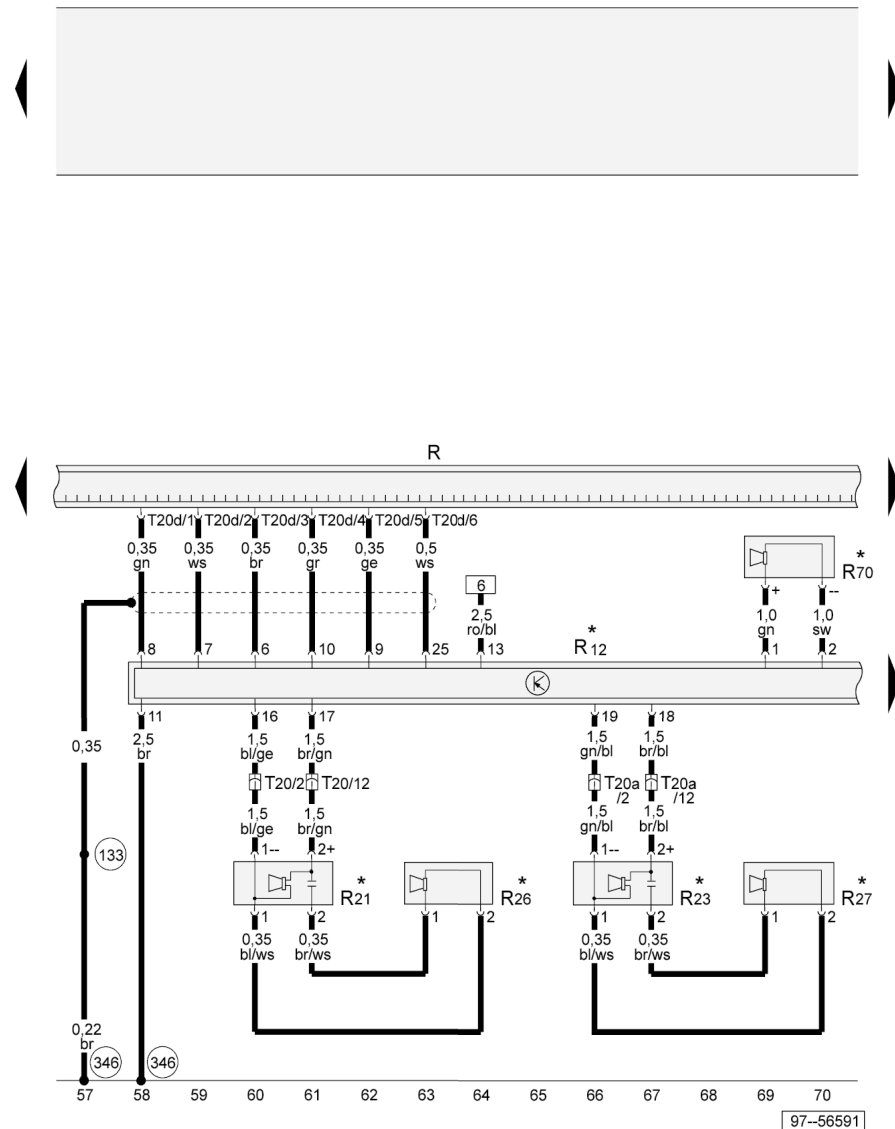
ws = white  
 sw = black  
 ro = red  
 br = brown  
 gn = green  
 bl = blue  
 gr = grey  
 li = purple  
 ge = yellow  
 or = orange  
 rs = pink

97-56590

## Audi A4

## Current Flow Diagram

No. 52 / 6



## Bose loudspeakers, front

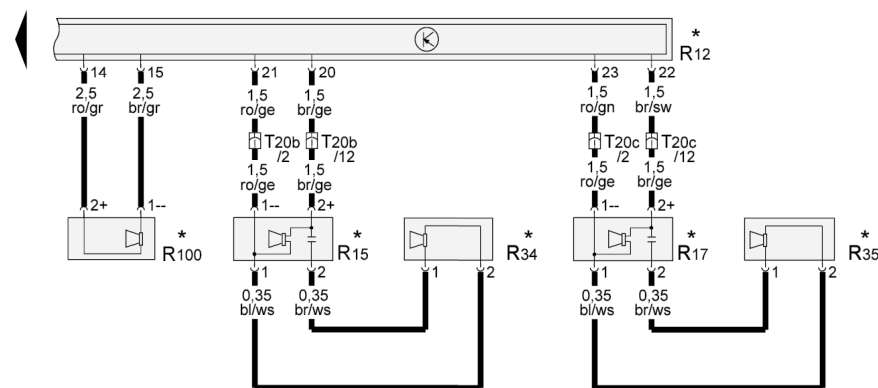
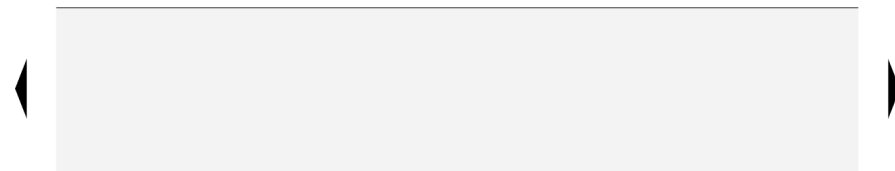
- R - Radio
- R12 - Amplifier
- R21 - Bass loudspeaker, front left
- R23 - Bass loudspeaker, front right
- R26 - Mid-range/treble loudspeaker, front left
- R27 - Mid-range/treble loudspeaker, front right
- R70 - Internal loudspeaker (centre loudspeaker)
- T20 - 20-pin connector, black, door, A pillar, left
- T20a - 20-pin connector, black, door, A pillar, right
- T20d - 20-pin connector, black, radio connector I
- 133 - Earth connection, in loudspeaker wiring harness
- 346 - Earth connection (audio), in dash panel wiring harness
- \* - Only applies to models with Bose sound system

97-56591

## Audi A4

## Current Flow Diagram

No. 52 / 7



## Bose loudspeakers, rear

- R - Radio
- R12 - Amplifier
- R15 - Bass loudspeaker, rear left
- R17 - Bass loudspeaker, rear right
- R34 - Mid-range/treble loudspeaker, rear left
- R35 - Mid-range/treble loudspeaker, rear right
- R100 - Bass loudspeaker
- T20b - 20-pin connector, black, door, B pillar, left
- T20c - 20-pin connector, black, door, B pillar, right
- \* - Only applies to models with Bose sound system

ws = white  
 sw = black  
 ro = red  
 br = brown  
 gn = green  
 bl = blue  
 gr = grey  
 li = purple  
 ge = yellow  
 or = orange  
 rs = pink





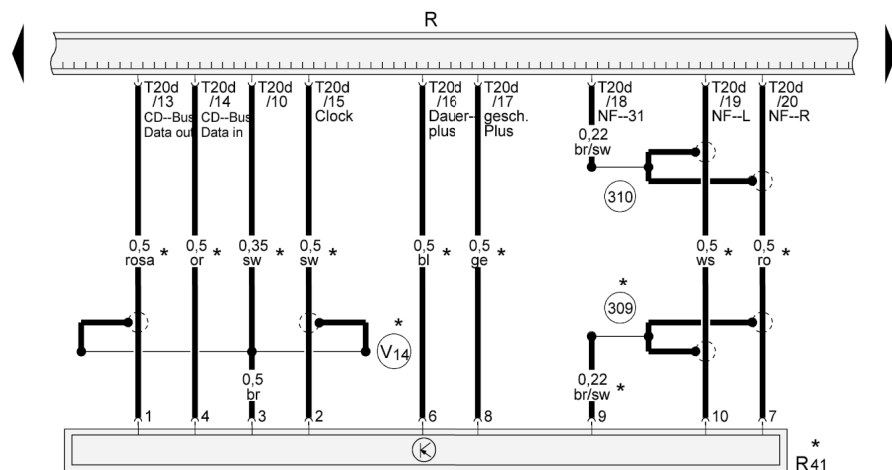
## Audi A4

## Current Flow Diagram

No. 52 / 8

## CD changer

- R - Radio 
- R41 - CD changer 
- T20d - 20-pin connector, black, radio connector I
- 309 - Earth connection -1-, screening, in CD changer wiring harness
- 310 - Earth connection -2-, screening, in CD changer wiring harness
- V14 - Connection (screening), in CD changer wiring harness
- \* - Only applies to models with CD changer

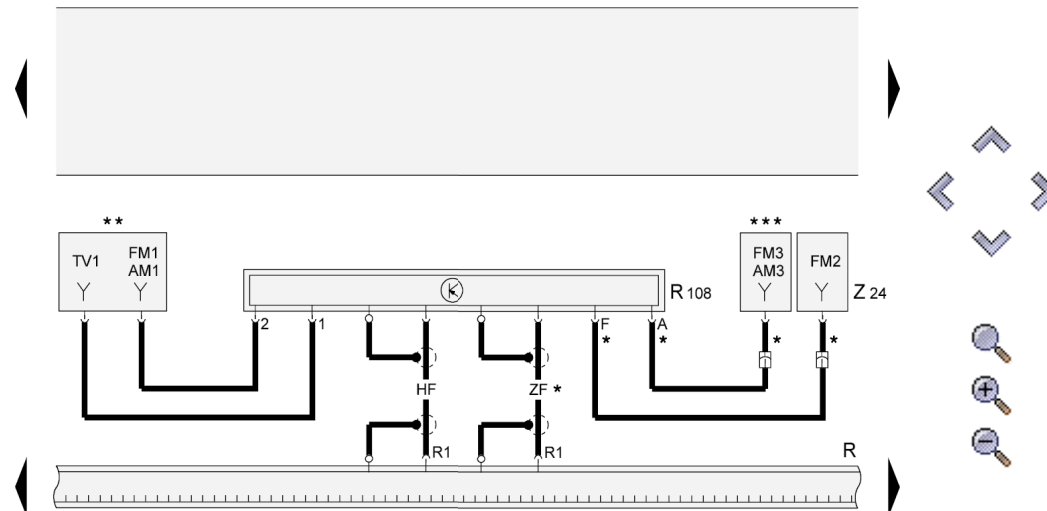


ws = white  
 sw = black  
 ro = red  
 br = brown  
 gn = green  
 bl = blue  
 gr = grey  
 li = purple  
 ge = yellow  
 or = orange  
 rs = pink

## Audi A4

## Current Flow Diagram

No. 52 / 9

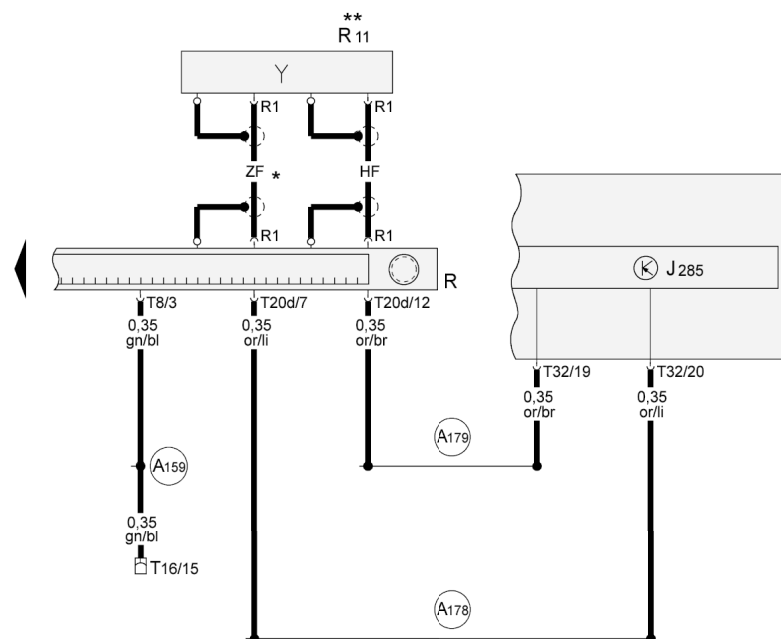
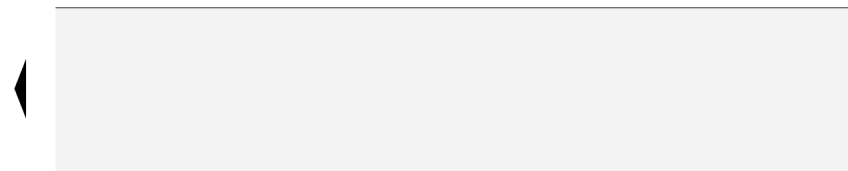


ws = white  
 sw = black  
 ro = red  
 br = brown  
 gn = green  
 bl = blue  
 gr = grey  
 li = purple  
 ge = yellow  
 or = orange  
 rs = pink

## Audi A4

## Current Flow Diagram

No. 52 / 10



## Aerial (saloon models), diagnostic connector, CAN bus

- J285 - Control unit with display in dash panel insert
- R - Radio
- R1 - Aerial connection
- R11 - Aerial
- T8 - 8-pin connector, black, radio connector III
- T16 - 16-pin connector, black, diagnostic connector
- T20d - 20-pin connector, black, radio connector I
- T32 - 32-pin connector, blue, on dash panel insert
- A159 - Connection (L), in dash panel wiring harness
- A178 - Connection (infotainment CAN bus, high), in dash panel wiring harness
- A179 - Connection (infotainment CAN bus, low), in dash panel wiring harness
- \* - Does not apply to radio Chorus
- \*\* - Aerial for saloon models

ws = white  
 sw = black  
 ro = red  
 br = brown  
 gn = green  
 bl = blue  
 gr = grey  
 li = purple  
 ge = yellow  
 or = orange  
 rs = pink

113 114 115 116 117 118 119 120 121 122 123 124 125 126

97-56595