

Small educational blurb: D1 and D2 bulbs are standard. D3 and D4 are mercury free. Mercury free and mercury bulbs are not interchangeable. However, D1 and D3 bulbs are similar in that they have the igniter permanently attached on the base rather than being like the D2 and D4 where the igniter is not integrated as part of the bulb. R type bulbs are easily distinguished by the brown ceramic film. S bulb will be clear. R and S bulbs are not interchangeable either. Your headlight in your car needs either R or S not either one.

Applies to following bulb types:

(Please note: Just because the bulb is not the exact type bulb you have you can still accurately derive conclusions from the pictures)



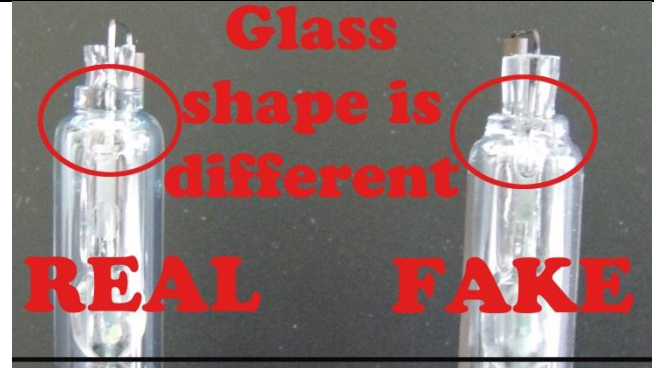

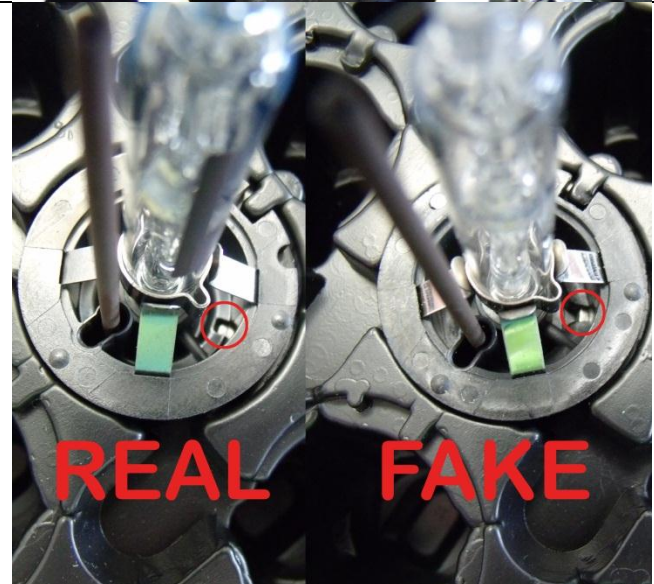
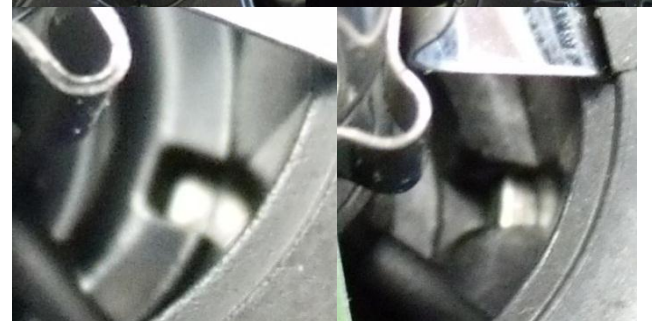
ALL TYPES

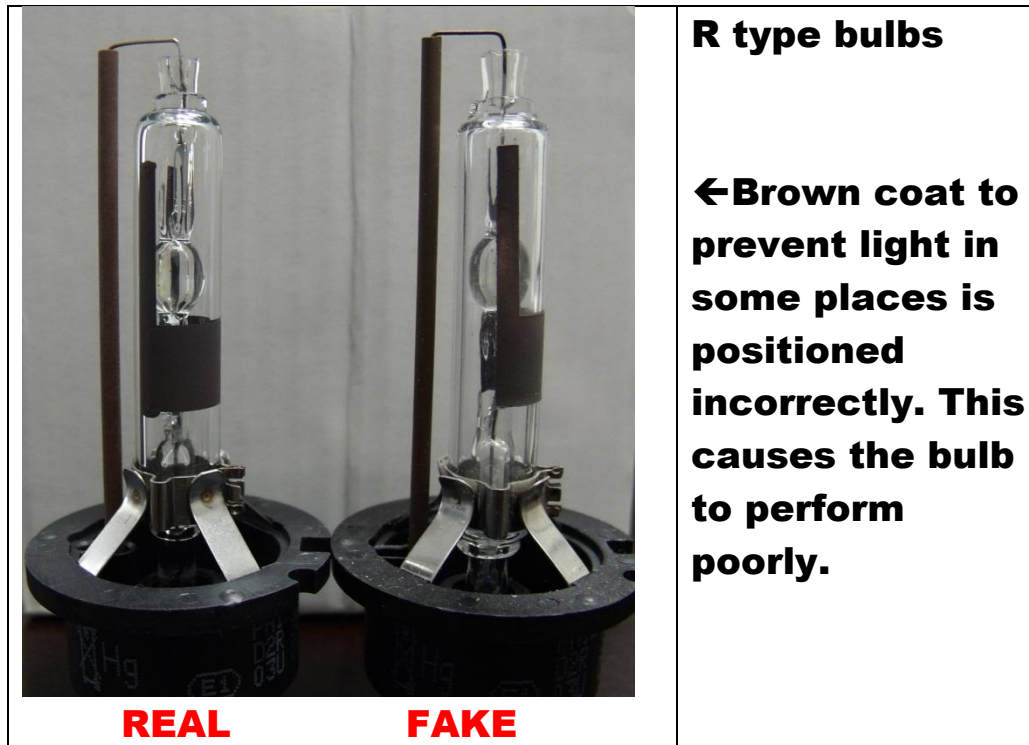


ALL TYPES

	<p>D2S & D2R.</p> <p>← It isn't the number that matters it's that the number is located 90° from where it should be.</p>
	<p>ALL R type bulbs</p> <p>← Brown coat is curved rather than 90° on real bulb.</p>

CONTINUE TO NEXT PAGE

 <p>Glass shape is different</p> <p>REAL FAKE</p>  <p>Black lines show arc chamber 1.5mm lower.</p>	<p>Top applies to all bulbs bottom applies to all R type bulbs</p> <p>←Arc chamber is off correct position. This creates poor performance.</p>
 <p>REAL FAKE</p> 	<p>ALL TYPES</p> <p>←Zoom in of the above</p>




CONTINUE TO NEXT PAGE

	<p>D1 & D3</p> <p>← Put a knife under one edge and peel it up about half an inch.</p>
<p>REAL FAKE</p> <p>When sticker is peeled off real bulb it leaves void lettering.</p> <p>REAL FAKE</p> 	
	<p>D1 & D3 bulbs (Label)</p> <p>←Box around E1 is a square in the fake and more like an oval in the real.</p>

CONTINUE TO NEXT PAGE

 <p>FAKE</p>	<p>D1 & D3</p> <p>Production code should never have a lower case letter in it.</p>
--	--

 <p>FAKE</p>	<p>D1 & D3</p> <p>(this is the serial number) If you are given two bulbs with the same serial number they aren't real. If you have a bulb with the serial in this photo it is also fake.</p>
---	---

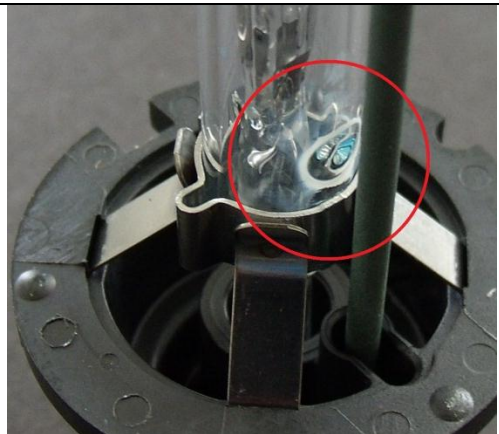
CONTINUE TO NEXT PAGE



REAL

Mercury free bulbs (D3 and D4)

← **Ceramic return insulator is darker green. Fake would possibly be a different color.**



REAL

← **Close up of last photo**

CONTINUE TO NEXT PAGE



REAL D4R REAL D2R

← **Notice glass tube is longer on the D2 bulb is longer than the D4 bulbs.**

All mercury free bulbs (D3&D4) should have a shorter arc tube than standard (D1&D2) bulbs.