

## Luggage compartment side trim

### 1 - Luggage compartment trim

- ◆ Removing
  - Take out luggage compartment cover.
  - Remove seat bench (rear) → Chapter.
  - Remove appropriate side padding → Chapter.
  - Unfasten appropriate lower seat belt anchorage point → Chapter.
  - Remove seat belt trim → Fig..
  - Remove rear cross panel trim → Chapter.
  - Unscrew bolts -4- (2x) for fastening rings -3-.
  - Detach cover -2-.
  - Unscrew bolt -6- (1x).
  - Unscrew bolt -7-.
  - Unclip rear trim.
  - Pull trim slightly forwards and unplug connector for rear socket.
- ◆ Installing
  - Engage luggage compartment trim at side window flange.
  - Perform remaining installation operations in reverse order of removal.

### 2 - Cover

### 3 - Fastening rings

### 4 - Bolt (2x)

- Tightening torque: 4.5 Nm

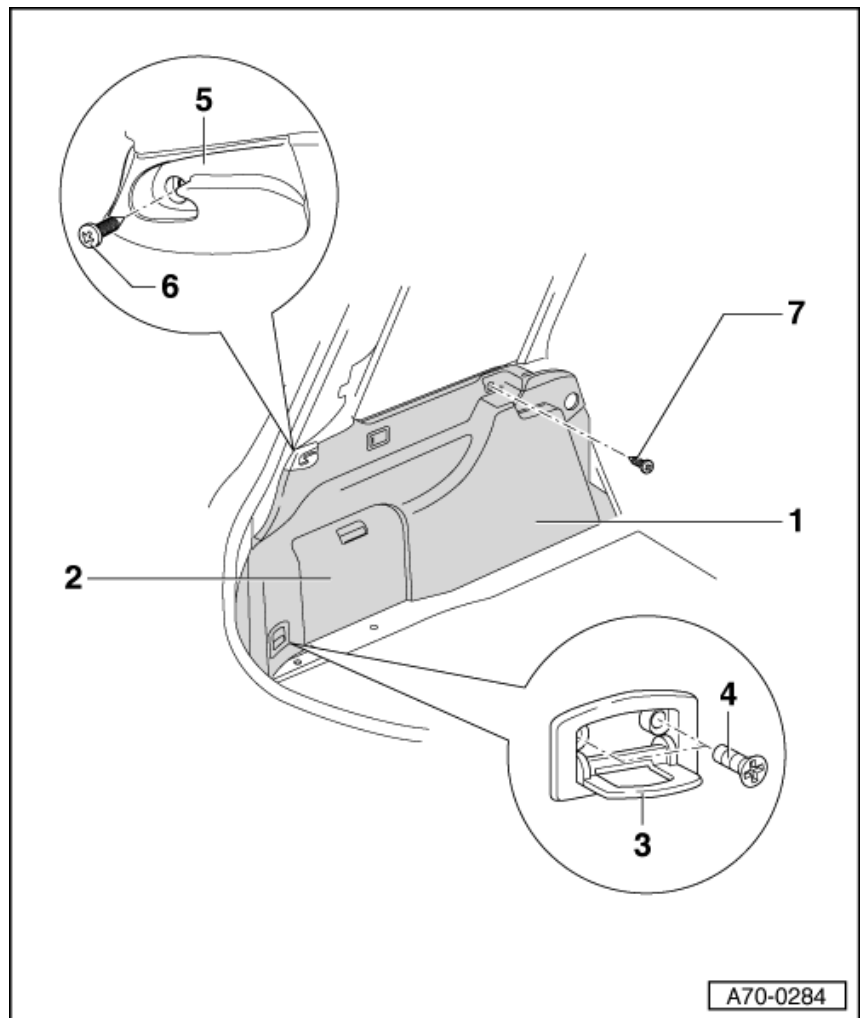
### 5 - Bracket for luggage compartment cover

### 6 - Bolt (1x)

- Tightening torque: 2.5 Nm

### 7 - Bolt (1x)

- Tightening torque: 2.5 Nm



### Removing and installing seat belt trim

- Use screwdriver to prise out retaining tabs -2- (2x).
- Pull out seat belt trim -1- in direction of arrow.
- Thread seat belt out of seat belt trim -1-.

