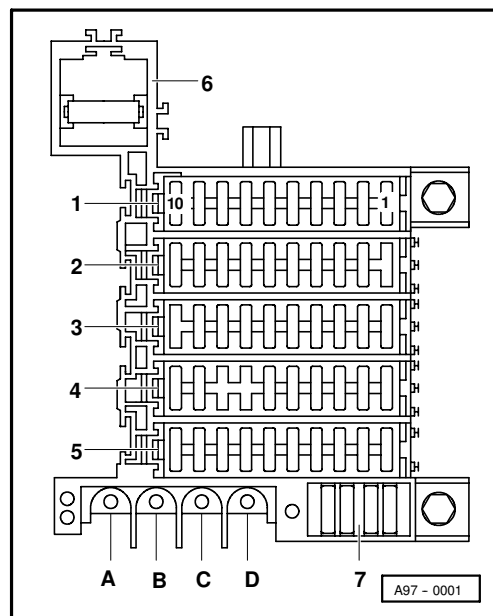


Radio stereo system: Chorus, Concert

Model year 1998

Fuse box

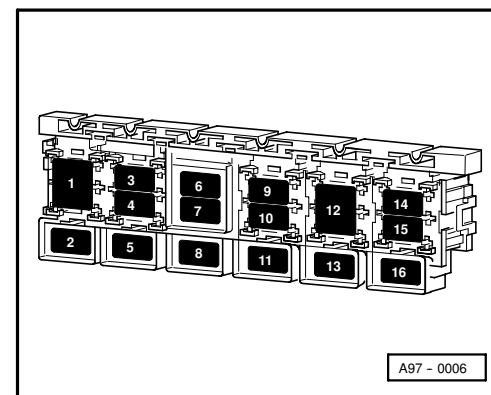


Fuse colours:

30 A - green
 25 A - white
 20 A - yellow
 15 A - blue
 10 A - red
 5 A - beige

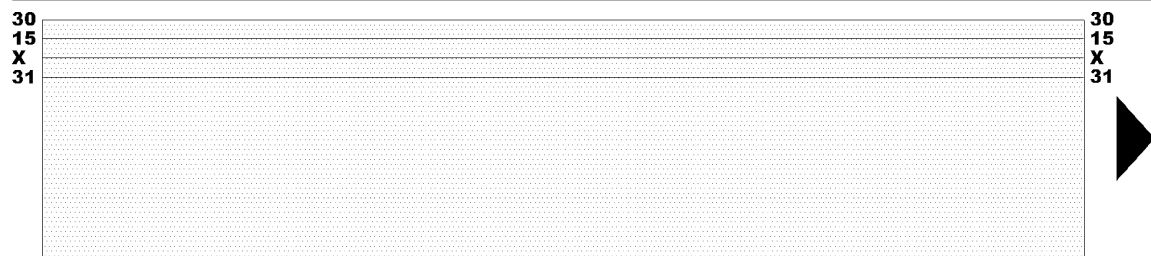
1-Fuse carrier 1 (ST1), black
 2-Fuse carrier 1 (ST2), red
 3-Fuse carrier 1 (ST3), yellow
 4-Fuse carrier 1 (ST4), blue
 5-Fuse carrier 1 (ST5), brown
 6-Radiator fan fuse (S42)
 7-Spare fuses
 A, B, C, D - Screwed junctions

Relay and fuse carrier, luggage compartment, right



Position of relays:

1 - Terminal 30 junction box
3 - Radio fuse (S92)



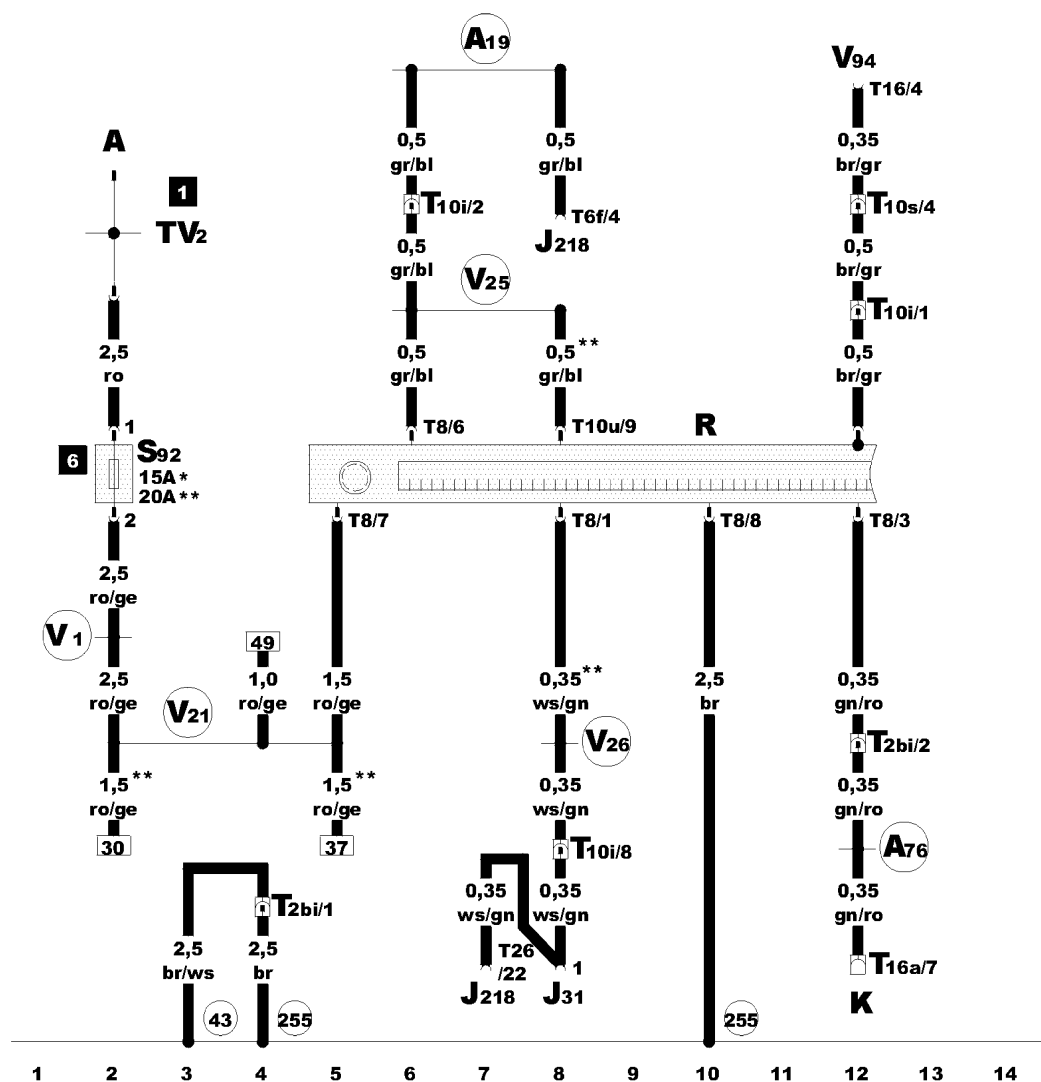
Radio stereo system: Chorus, Concert

- A - Battery
- J31 - Automatic intermittent wash/wipe relay
- J218 - Combi-processor in dash panel insert
- K - Diagnosis connection
- R - Radio
- S92 - Radio fuse
- T2bi - 2-pin connector, brown, in centre console
- T6f - 6-pin connector, black, on dash panel insert
- T8 - 8-pin connector, black, radio connector III
- T10s - 10-pin connector, black, footwell, right, at wheelhouse, behind carpet
- T10u - 10-pin connector, red, radio connector IV
- T16 - 16-pin connector, connector plug C at V94
- T16a - 16-pin connector, diagnosis connection
- T26 - 26-pin connector, red, on dash panel insert
- TV2 - Terminal 30 junction box
- V94 - Central locking motor with control unit for interior lights switch-off delay and anti-theft alarm system

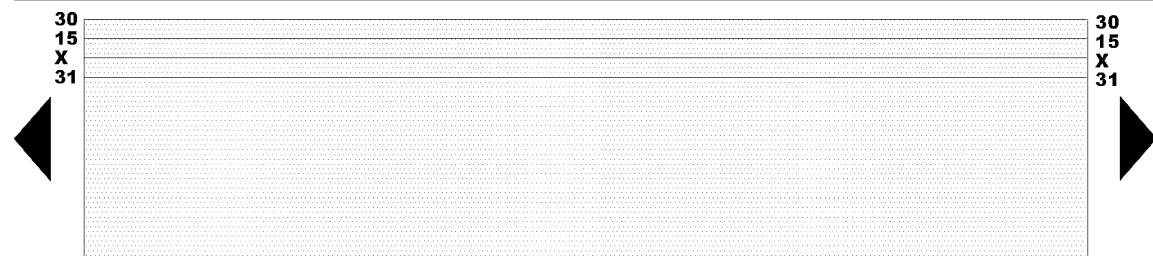
- (43) - Earth point, lower part of right A-pillar
- (255) - Earth connection, in radio wiring harness
- (A19) - Connection (58d), in dash panel wiring harness
- (A76) - Connection (diagnosis wire K), in dash panel wiring harness
- (V1) - Positive (+) connection (30), in rear loudspeaker wiring harness
- (V21) - Positive (+) connection (30), in radio - amplifier wiring harness
- (V25) - Connection (58), in navigation wiring harness
- (V26) - Connection (speed signal), in navigation wiring harness

- * - Radio with 6 loudspeakers
- ** - Radio with 10 loudspeakers

ws = white
 sw = black
 ro = red
 br = brown
 gn = green
 bl = blue
 gr = grey
 li = purple
 ge = yellow



97-20069

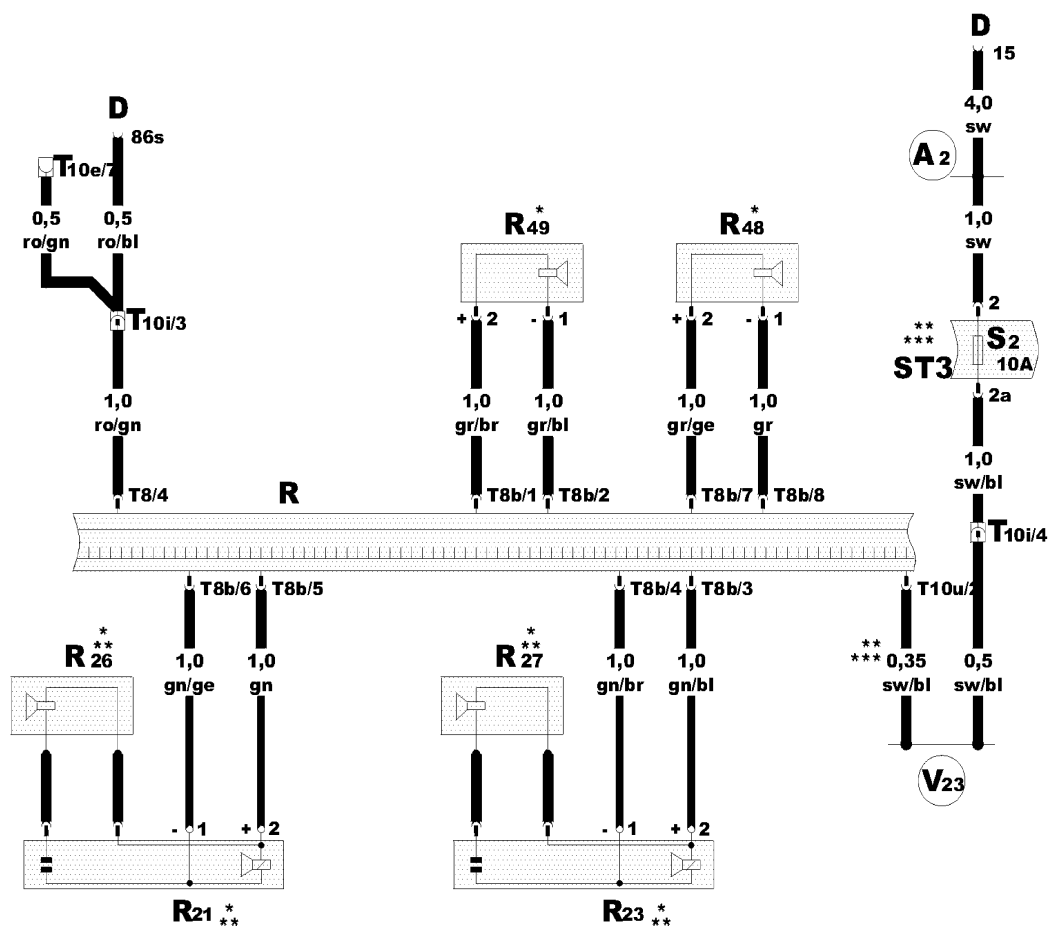


Radio stereo system: Chorus, Concert

- D - Ignition/starter switch
- R - Radio
- R21 - Bass loudspeaker, front left
- R23 - Bass loudspeaker, front right
- R26 - Middle-high tone loudspeaker, front left
- R27 - Middle-high tone loudspeaker, front right
- R48 - Wide band loudspeaker, rear shelf, left
- R49 - Wide band loudspeaker, rear shelf, right
- S2 - Fuse in fuse carrier
- T8 - 8-pin connector, black, radio connector III
- T8b - 8-pin connector, brown, radio connector II
- T10e - 10-pin connector, green, footwell, right, at wheelhouse, behind carpet
- T10i - 10-pin connector, yellow, in centre console
- T10u - 10-pin connector, red, radio connector IV

- (A2) - Positive (+) connection (15), in dash panel wiring harness
- (V23) - Positive (+) connection (15a), in navigation wiring harness

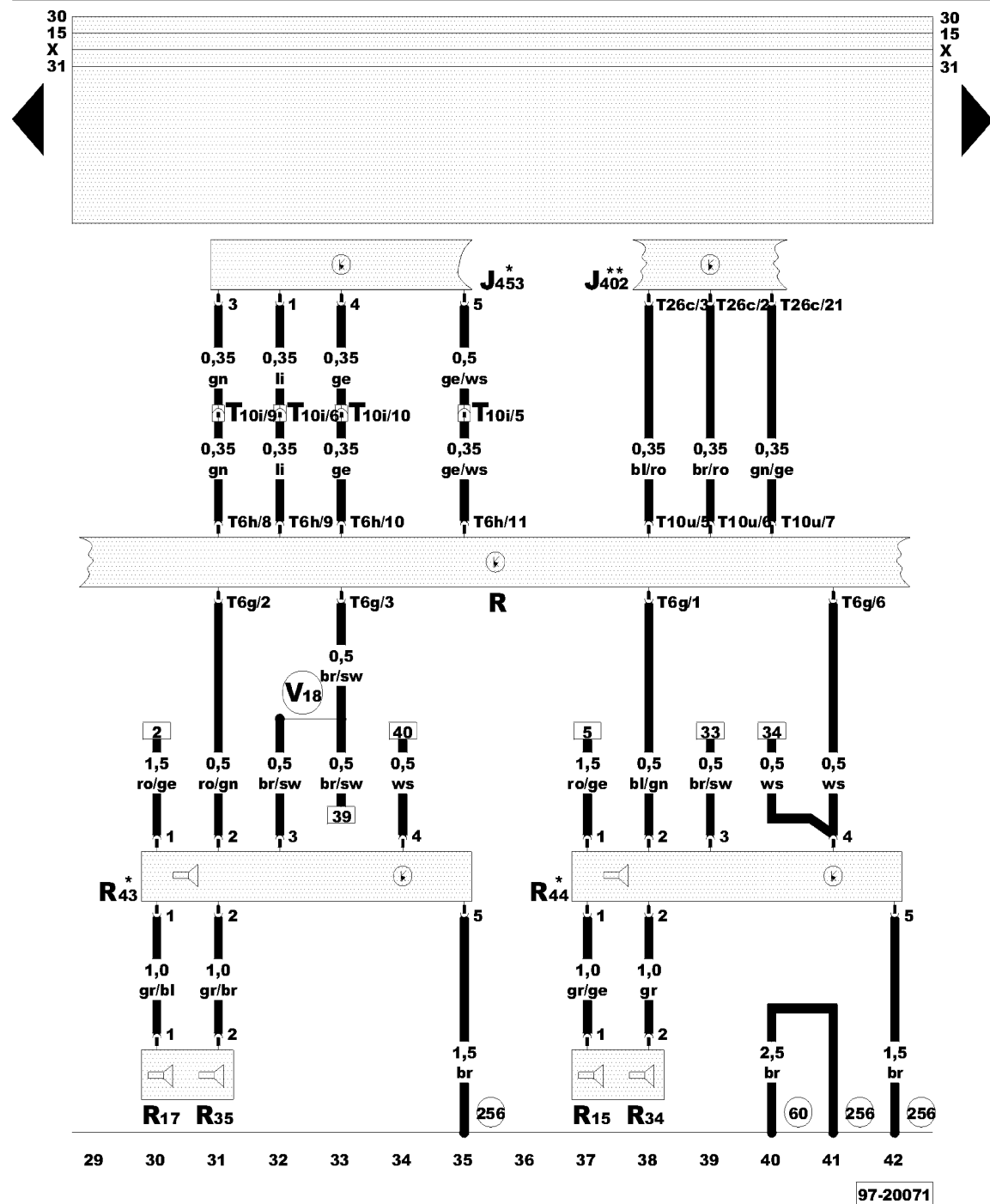
- * - Models with 6 loudspeakers
- ** - Models with 10 loudspeakers
- *** - Models with navigation system



ws = white
 sw = black
 ro = red
 br = brown
 gn = green
 bl = blue
 gr = grey
 li = purple
 ge = yellow

15 16 17 18 19 20 21 22 23 24 25 26 27 28

97-20070

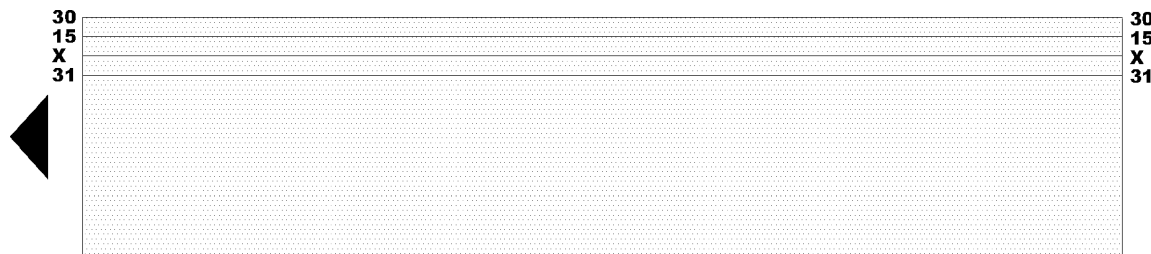


Radio stereo system: Chorus, Concert

- J402 - Operating electronics control unit, navigation
- J453 - Multi-function steering wheel control unit
- R - Radio
- R15 - Bass loudspeaker, rear left
- R17 - Bass loudspeaker, rear right
- R34 - Middle-treble tone loudspeaker, rear left
- R35 - Middle-treble tone loudspeaker, rear right
- R43 - Amplifier with bass loudspeaker (luggage compartment, right)
- R44 - Amplifier with bass loudspeaker (luggage compartment, left)
- T6g - 6-pin connector, yellow, radio connector I-1
- T6h - 6-pin connector, green, radio connector I-2
- T10i - 10-pin connector, yellow, in centre console
- T10u - 10-pin connector, red, radio connector IV
- T26c - 26-pin connector, on operating electronics control unit, navigation

- 60 - Earth point, near right tail light
- 256 - Earth connection, in radio wiring harness
- V18 - Connection (negative (-), rear loudspeaker), in loudspeaker wiring harness

- * - Models with 10 loudspeakers
- ** - Models with navigation system



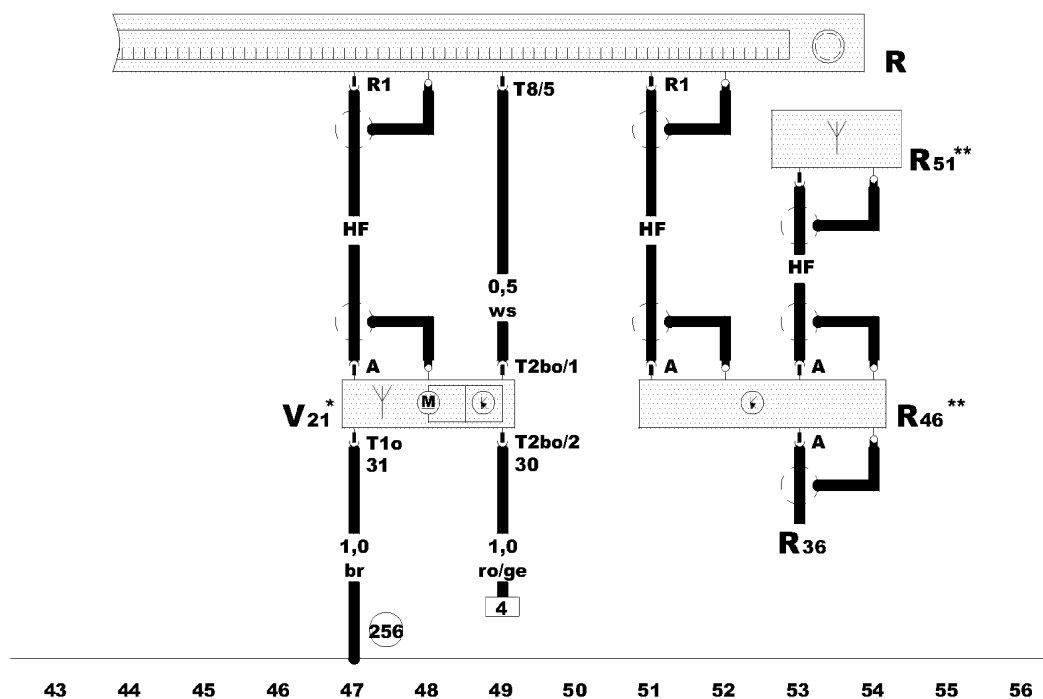
Radio stereo system: Chorus, Concert

- R - Radio
- R1 - Aerial connection
- R36 - Telephone transmitter and receiver unit
- R46 - Frequency divider for radio receiver and radio system
- R51 - Antenna per radio/telephone
- T1o - Single connector, on aerial motor
- T2bo - 2-pin connector, on aerial motor
- T8 - 8-pin connector, black, radio connector III
- V21 - Aerial motor

(256) - Earth connection, in radio wiring harness

* - Models with aerial motor

** - Models with telephone



ws = white
sw = black
ro = red
br = brown
gn = green
bl = blue
gr = grey
li = purple
ge = yellow