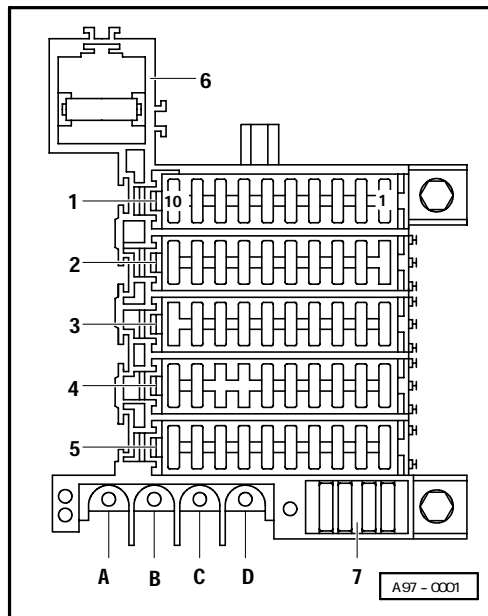


Radio gamma, delta sound system, radio-Bose sound system with and without CD changer

Model year 1997

Fuse box

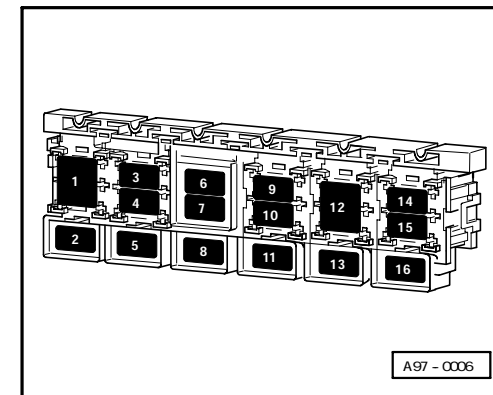


Fuse colours:

30 A - green
 25 A - white
 20 A - yellow
 15 A - blue
 10 A - red
 5 A - beige

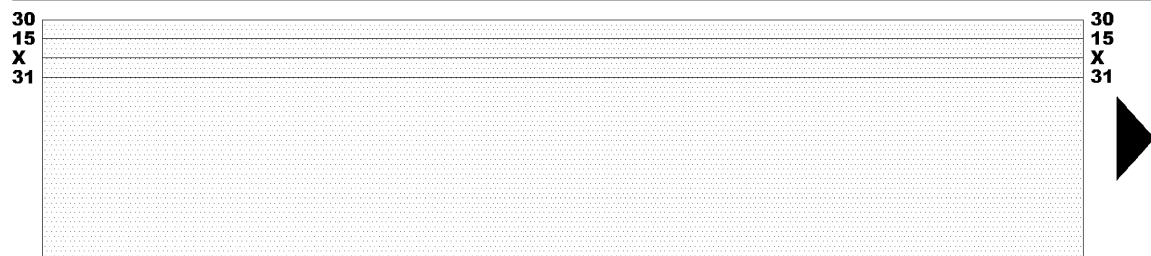
1-Fuse carrier 1 (ST1), black
 2-Fuse carrier 1 (ST2), red
 3-Fuse carrier 1 (ST3), yellow
 4-Fuse carrier 1 (ST4), blue
 5-Fuse carrier 1 (ST5), brown
 6-Radiator fan fuse (S42)
 7-Spare fuses
 A, B, C, D - Screwed junctions

Relay and fuse carrier, luggage compartment, right



Position of relays:

1 -Terminal 30 junction box
7 -Radio fuse (S92)



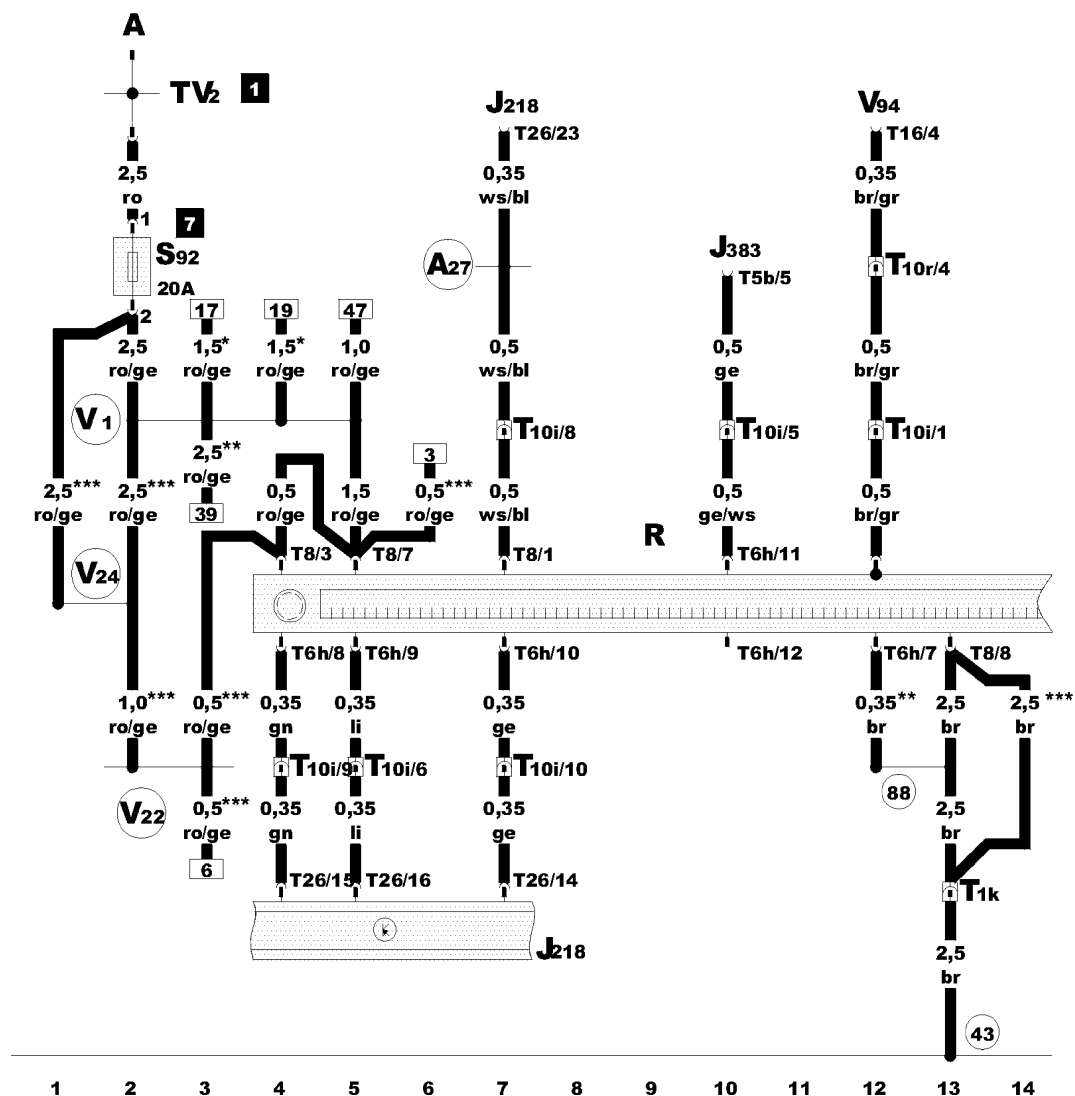
Radio gamma, delta sound system, radio-Bose sound system with and without CD changer

- A - Battery
- J218 - Combi-processor in dash panel insert
- J383 - Audio steering wheel printed circuit board
- R - Radio
- S92 - Radio fuse
- T1k - Single connector, brown, in centre console
- T5b - 5-pin connector, black, behind steering column switch trim
- T6h - 6-pin, connector, green, radio connector I-2
- T8 - 8-pin connector, black, radio connector III
- T10i - 10-pin connector, yellow, in centre console
- T10r - 10-pin pin connector, dark brown, connector point, wheelhouse, right
- T16 - 16-pin connector, connector plug C at V94
- T26 - 26-pin connector, red, on dash panel insert
- TV2 - Terminal 30 junction box
- V94 - Central locking motor with control unit for interior lights switch-off delay and anti-theft alarm system

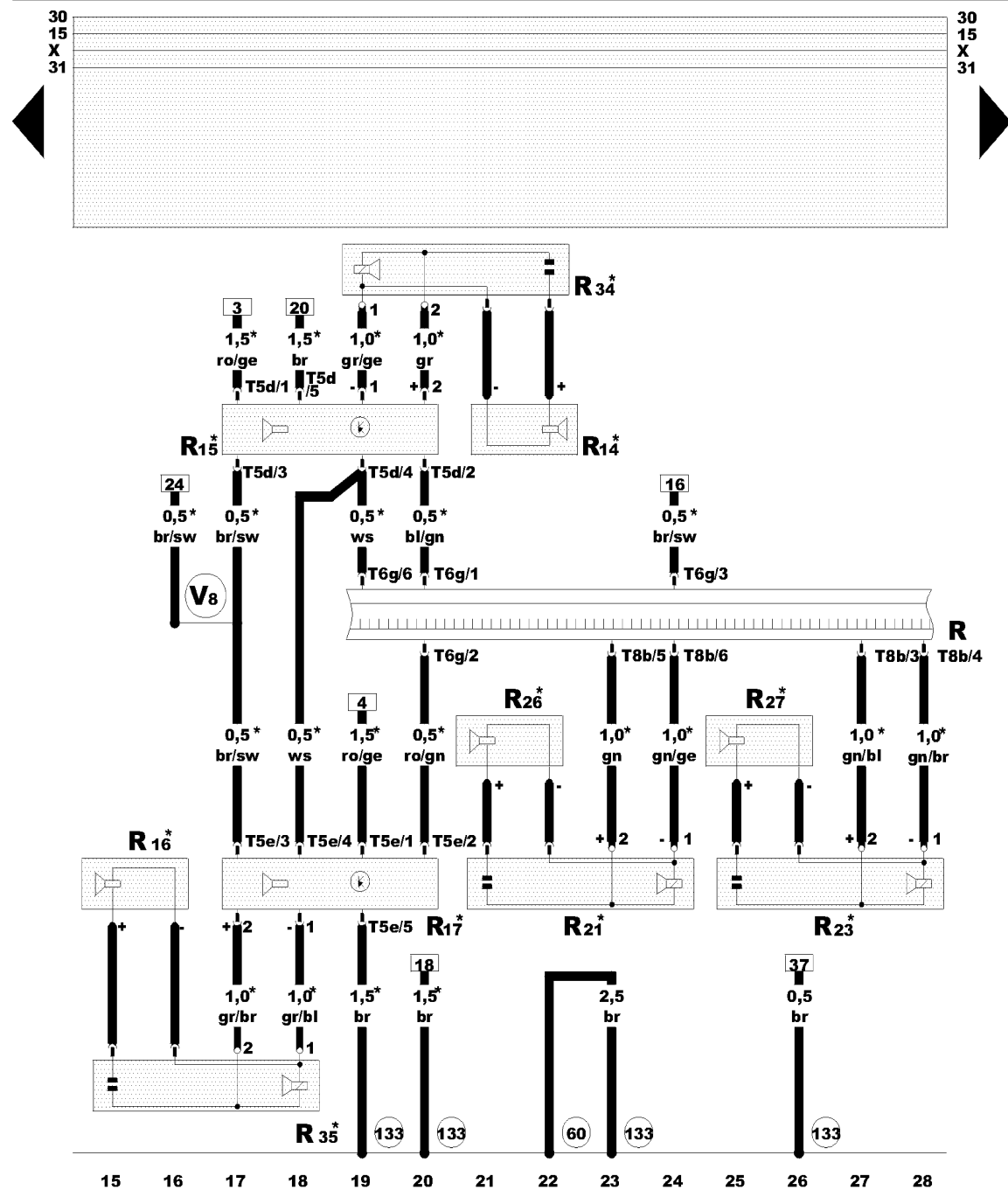
- (43) - Earth point, lower part of right A-pillar
- (88) - Earth connection, in radio wiring harness
- (A27) - Connection (speed signal), in dash panel wiring harness
- (V1) - Positive (+) connection (30), in rear loudspeaker wiring harness
- (V22) - Positive (+) connection (30a), in navigation wiring harness
- (V24) - Positive (+) connection (30a), in loudspeaker wiring harness

- * - Radio gamma, delta sound system
- ** - Radio-Bose-sound system
- *** - Only models with navigation system

ws = white
 sw = black
 ro = red
 br = brown
 gn = green
 bl = blue
 gr = grey
 li = purple
 ge = yellow



97-18605



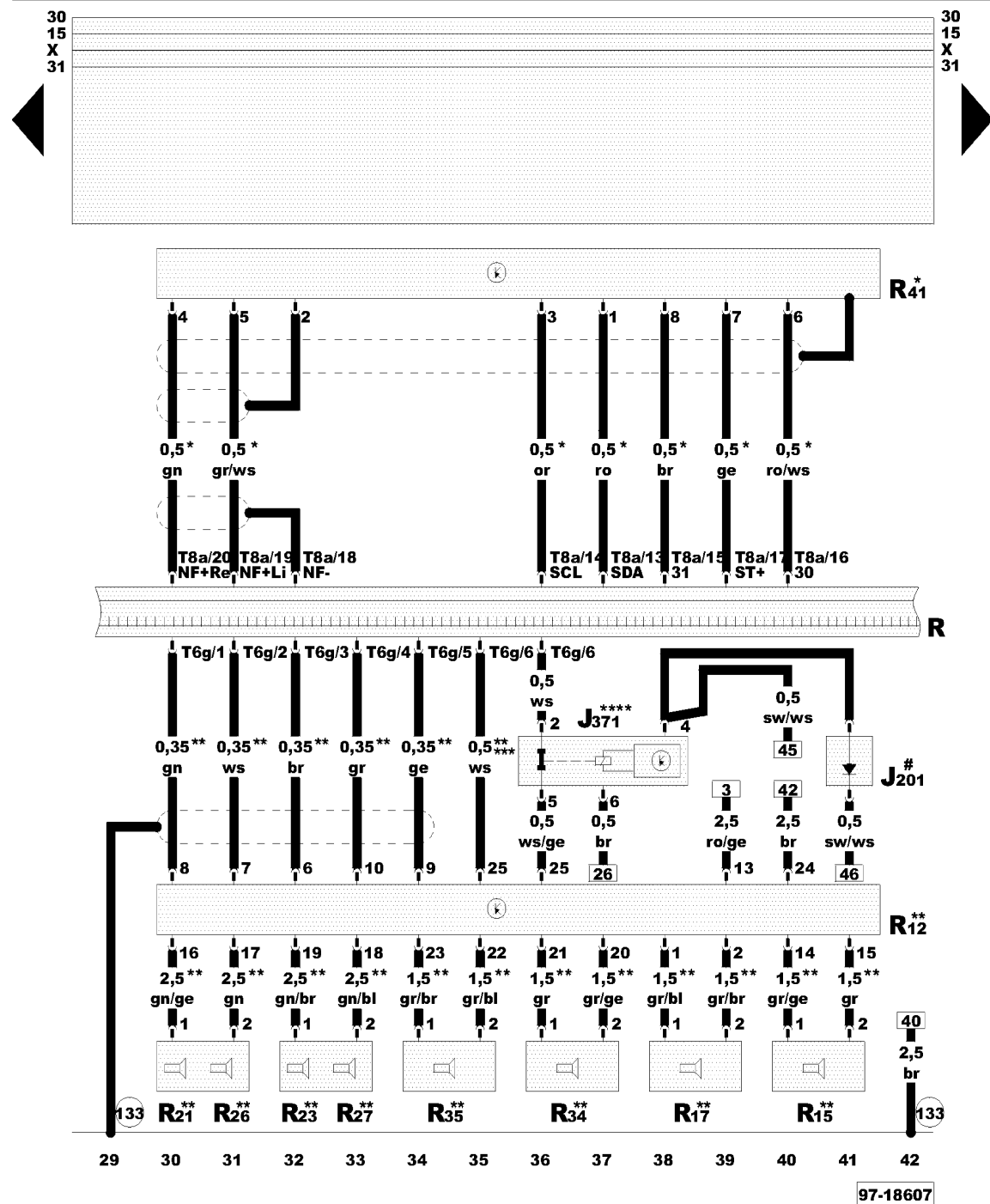
97-18606

Radio gamma, delta sound system, radio-Bose sound system with and without CD changer

- R - Radio
- R14 - Treble loudspeaker, rear left
- R15 - Bass loudspeaker, rear left
- R16 - Treble loudspeaker, rear right
- R17 - Bass loudspeaker, rear right
- R21 - Bass loudspeaker, front left
- R23 - Bass loudspeaker, front right
- R26 - Middle-high tone loudspeaker, front left
- R27 - Middle-high tone loudspeaker, front right
- R34 - Middle-treble tone loudspeaker, rear left
- R35 - Middle-treble tone loudspeaker, rear right
- T5d - 5-pin connector, on loudspeaker rear left, under rear shelf
- T5e - 5-pin connector, on loudspeaker rear right, under rear shelf
- T6g - 6-pin connector, yellow, radio connector I-1
- T8b - 8-pin connector, brown, radio connector II

- (60) - Earth point, near right tail light
- (133) - Earth connection, in loudspeaker wiring harness
- (V8) - Connection (negative, loudspeaker) in loudspeaker wiring harness

* - Radio gamma, delta sound system



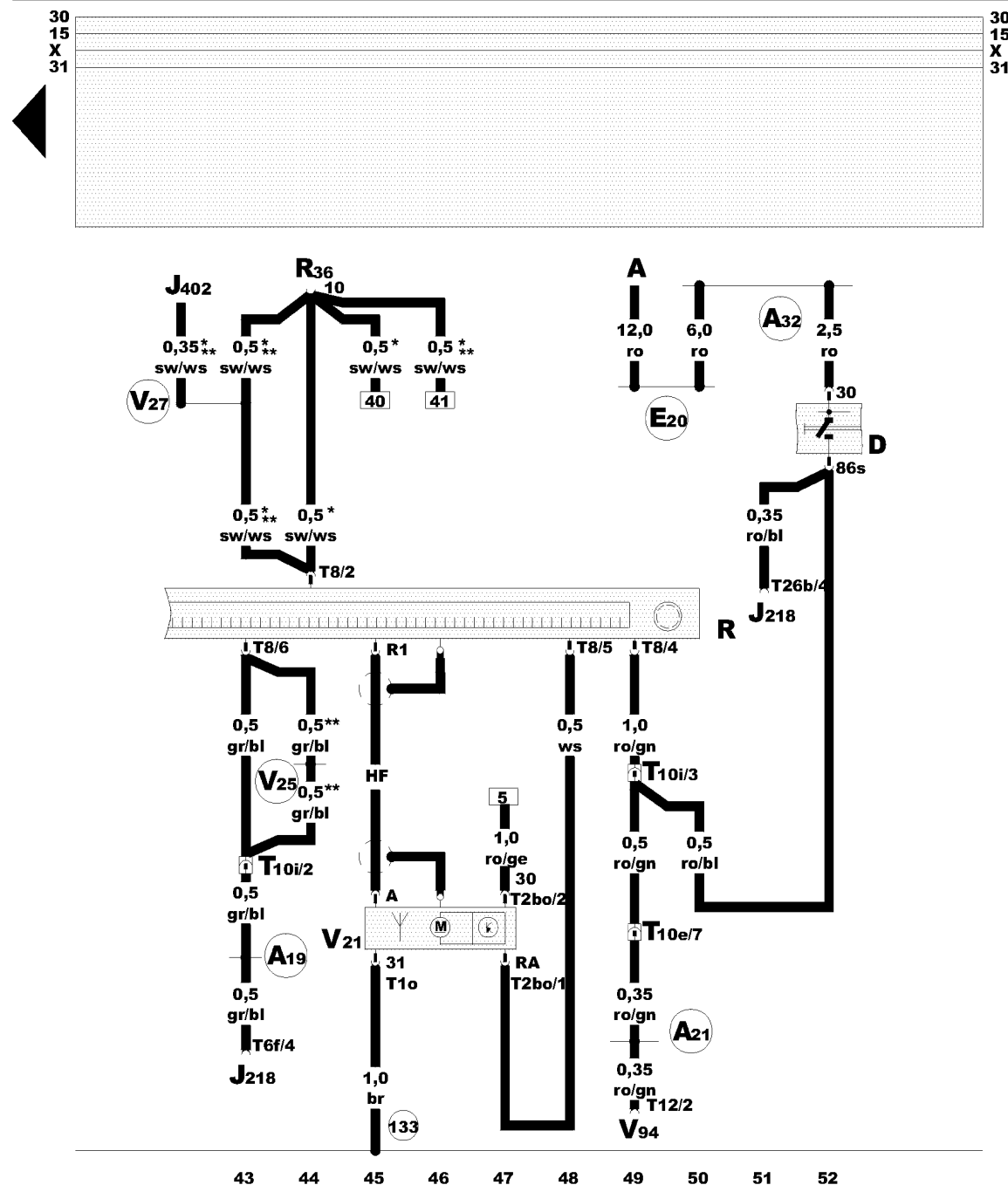
Radio gamma, delta sound system, radio-Bose sound system with and without CD changer

- J201 - Protective diode
- J371 - Telephone isolation relay, near frequency divider in rear left luggage compartment
- R - Radio
- R12 - Amplifier
- R15 - Bass loudspeaker, rear left
- R17 - Bass loudspeaker, rear right
- R21 - Bass loudspeaker, front left
- R23 - Bass loudspeaker, front right
- R26 - Middle-high tone loudspeaker, front left
- R27 - Middle-high tone loudspeaker, front right
- R34 - Middle-treble tone loudspeaker, rear left
- R35 - Middle-treble tone loudspeaker, rear right
- R41 - CD changer
- T6g - 6-pin connector, yellow, radio connector I-1
- T8a - 8-pin connector, blue, radio connector I-3

133 - Earth connection, in loudspeaker wiring harness

- * - Only models with CD changer
- ** - Radio-Bose-sound system
- *** - Models without telephone
- **** - Models with telephone
- # - Models with navigation system

ws = white
sw = black
ro = red
br = brown
gn = green
bl = blue
gr = grey
li = purple
ge = yellow



Radio gamma, delta sound system, radio-Bose sound system with and without CD changer

- A - Battery
- D - Ignition/starter switch
- J218 - Combi-processor in dash panel insert
- J402 - Operating electronics control unit, navigation
- R - Radio
- R36 - Telephone transmitter and receiver unit
- T10 - Single connector, on aerial motor
- T2bo - 2-pin connector, on aerial motor
- T6f - 6-pin connector, black, on dash panel insert
- T8 - 8-pin connector, black, radio connector III
- T10e - 10-pin connector, green, connector point, wheelhouse, right
- T10i - 10-pin connector, yellow, in centre console
- T12 - 12-pin connector, connector plug A at V94
- T26b - 26-pin connector, yellow, on dash panel insert
- V21 - Aerial motor
- V94 - Central locking motor with control unit for interior lights switch-off delay and anti-theft alarm system

- (133) - Earth connection, in loudspeaker wiring harness
- (A19) - Connection (58d), in dash panel wiring harness
- (A21) - Connection (86s), in dash panel wiring harness
- (A32) - Positive (+) connection (30), in dash panel wiring harness
- (E20) - Positive (+) connection (30), in Motronic wiring harness
- (V25) - Connection (58), in navigation wiring harness
- (V27) - Connection (mute circuit), in navigation wiring harness

ws = white
sw = black
ro = red
br = brown
gn = green
bl = blue
gr = grey
li = purple
ge = yellow

- * - Models with telephone
- ** - Only models with navigation system